

MEN'S SHIRTS | BODY MEASUREMENTS

SIZE	XS	S	M	L	XL	XXL	3XL
CHEST	36-38	38-40	40-42	42-44	46-48	50-52	54-56
NECK	13-14	14-14½	15-15½	16-16½	17-17½	18-18½	19-19½
SLEEVE (From Center Back)	32-33	32-33	34-35	34-35	34-36	34-36	34-36

CLASSIC FIT



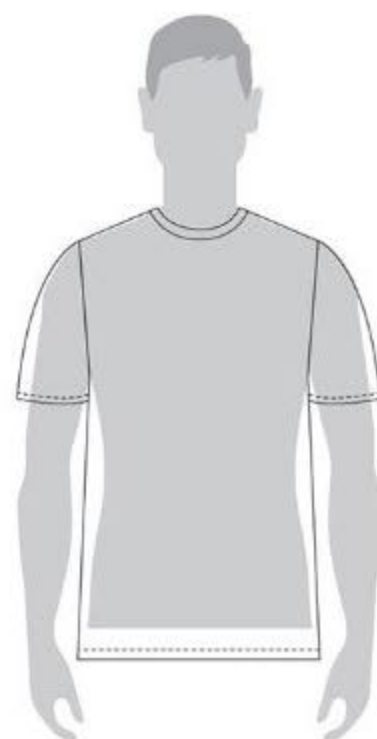
- The original Cinch fit. Our roomiest fit.
- Cinch Classic shirts fit much larger than most other men's shirt brands.
- Many individuals will need to size down one or two sizes.
- Body width is full, sleeves & shirt tails are longer. Designed for a body in motion.
- Classic shirts on average are 2" longer in sleeve & body length than other brands.
- Cinch Classic shirts suit men who normally have to wear big & tall sizes.

MODERN FIT



- Our newest Cinch Fit. More tailored than Cinch Classic.
- Cinch Modern Fit shirts fit very similar to mainstream men's shirt brands. More true to size.
- Many individuals will need to size up from Cinch Classic.
- Body is narrower than Cinch Classic, but sleeve length remains the same.
- Body length & shirt tails are shorter than Cinch Classic.

TEES



- Regular fit. Not too small, not too big.
- Soft, high quality jersey knit fabrics.
- Tag free design for comfort.
- Printed in the USA