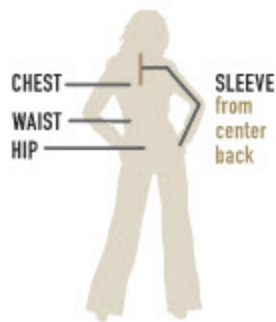




# ARIAT®

WOMEN'S

	ALL	XS	S	M	L	XL	XXL							
CHEST	IN	32	33	34	35	36	37	38 ½	40	41 ½	43	45-47		
	CM	81.28	83.82	86.36	88.9	91.44	93.98	97.79	101.6	105.41	109.22	114.3-119.38		
WAIST	IN	26	26	27	28	29	30	31 ½	33	34 ½	36	38-40		
	CM	63.5	66.04	68.58	71.12	73.66	76.2	80.01	83.82	87.63	91.44	96.52-101.6		
LOW HIP	IN	26	36	37	38	39	40	41 ½	43	44 ½	46	48-50		
	CM	88.9	91.44	93.98	96.52	99.06	101.6	105.41	109.22	113.03	116.84	121.92-127		
SLEEVE	IN	26	30 ½	30 ¾	31	31 ¼	31 ½	31 ¾	32	32 ¼	32 ½	32 ½		
	CM	76.84	77.47	78.11	78.74	79.38	80.01	80.65	81.28	81.92	82.55	82.55		
SHOW SHIRTS	US		30	32	34	36	38	40	42					
	UK/EUR		32	34	36	38	40	42	44					
HUNT COATS	US		2R	4R	6R	8R	10R	12R	14R					
	EUR		32R	34R	36R	38R	40R	42R	44R					
	UK		8R	10R	12R	14R	16R	18R	20R					
BREECHES	US/UK		22R	24R	26R	28R	30R	32R	34R	36R				
	GER		34	36	38	40	42	44	46	48				
	US/UK		22L	24L	26L	28L	30L	32L	34L	36L				
	GER		68	72	76	80	84	88	92	96				
NUMERIC SIZE	USA		2	4	6	8	10	12						



### MEASUREMENT GUIDE

**CHEST** Measure around the shoulder blades, under the armpits and over the fullest part of the bust.

**SLEEVE** Bend your arm 90 degrees and put your hand on your hip. Hold the tape measure at the center back of your neck and measure across your shoulder to your elbow, and then down to your wrist.

**WAIST** Find your natural waistline and measure.

**HIP** Measure the fullest part of the hip, usually 7-9 inches below the waist.

**LONG & TALL LENGTHS** Sleeve lengths are 1" longer and body lengths are 1½" longer than regular sizing.

**BREECHES** Ariat® breeches are designed to hit a few inches above your ankle bone for comfort. Inseams 25.5" Regular and 27.5" Long.

