

# WHAT IS THE EQUILOX ADHESIVE HOOF REPAIR SYSTEM AND HOW DOES IT WORK?

The Equilox Adhesive Hoof Repair System is the farrier's best tool for fixing old problems. Equilox Adhesive is an extremely flexible resin for easy shaping and filing that tightly bonds to the natural hoof and remains intact to endure tremendous pressure—even nailing.

Developed in 1988 after many trials and extensive research at leading universities and equine centers throughout the U.S., the Equilox Adhesive Hoof Repair System was originally used to treat competitive horses. Now, with new technology and innovative packaging systems, Equilox Adhesive is more affordable and used by farriers, equine centers, and horse owners—as well as various zoo and wildlife centers—throughout the world.

Use Equilox Adhesive for:

- » *Glue-on aluminum footwear*
- » *Restoring hoof wall integrity*
- » *Major hoof reconstruction*
- » *Patching cracks*
- » *Foal extensions*
- » *Preventing infection*

Only Equilox is strong enough to stand up to everyday wear and tear, yet remains flexible for easy filing and shaping—even nailing—to handle all your repair jobs, from patching quarter cracks, to major hoof wall reconstruction.



# EQUILOX ADHESIVE DIRECTIONS FOR USE

There are two important points to remember to achieve the proper mix of Equilox:

- 1 » *Mix both components completely before application.*
- 2 » *Proper application and timing of the cure cycle.*

## Mixing and Adhesive Preparation for Single Use



Figure 1



Figure 2

- STEP 1** Open container. Remove accelerator ampule bag and red cup.
- STEP 2** Knead accelerator bag thoroughly before dispensing.
- STEP 3** Cut dispensing nozzle of accelerator bag, and dispense all contents into container on top of the adhesive. (See figure 1)
- STEP 4** Mix thoroughly for at least 1 to 1½ minutes. Scrape sides and bottom. (See figure 2)
- STEP 5** Adhesive is now ready to apply. To achieve maximum bond strength, freshly mixed Equilox Adhesive must be applied to the hoof wall as soon as practical after mixing.
- STEP 6** After use, combine used components in container. Then cap and dispose.

*Tip:* Mix or add shredded fiberglass to adhesive to increase tensile strength and add extra bulk when molding and sculpting around angle of the heel.

# GLUE-ON ALUMINUM SHOES

## Aluminum Shoe Preparation

Proper shoe preparation is important in order to achieve maximum adhesion.

- STEP 1** Grind down the foot bearing side of the shoe to reveal a clean metal surface. (See figure 3)
- STEP 2** Remove any residue, oil, and grease from the shoe.

*Tip:* After completing Step 2, avoid direct skin contact with the cleaned shoe surface.



Figure 3

## Hoof Preparation

Thorough and careful hoof preparation cannot be emphasized enough as adhesion could be impaired if oil or dirt are present on the hoof wall.

- STEP 1** Remove all loose, flaky, or damaged hoof wall and dead sole.
- STEP 2** Use a wire brush and remove any black areas around white line. (See figure 4)
- STEP 3** Clean along inside of the bar for a clean surface for adhesion.
- STEP 4** Clean tracks and angle of bar. (See figure 5)
- STEP 5** Apply disinfectant powder to any black cavities or tracks.
- STEP 6** Clean up edges with sand paper
- STEP 7** Dry the foot with external heat to completely remove any moisture.



Figure 4



Figure 5

- STEP 8** You are now ready to glue on the shoe. If you must put the horse's foot down before gluing the shoe, be sure to wrap it with clean cloth and cover with a bootie sock so that it remains clean.

*Tip:* If you wore latex gloves while preparing the hoof, replace with a new, clean pair before applying Equilox.



Figure 7



Figure 8



Figure 9

## Application

- STEP 1** Ensure horse is standing good and square with its opposite foot directly under its body.

- STEP 2** Pick up the foot and first apply an even layer of Equilox Adhesive to the hoof foot. Then apply an even layer of adhesive on the shoe. (See figure 7)

*Tip:* If adhering shoe in a colder climate, first heat the shoe gently so that the adhesive sets up faster.

- STEP 3** Press the shoe onto the foot.

- STEP 4** With a mixing stick, spread adhesive around angle of heel, inside of the bar, and around outside of heel. Apply more adhesive if necessary. (See figure 8)

- STEP 5** Run gloved finger around sole to remove excess glue and to smooth the adhesive.

*Tip:* If gluing onto a thin-heeled sole, take the clean end of a mixing stick and remove adhesive from the inner rim of shoe to relieve excess pressure.

- STEP 6** Use gauze to remove any excess glue.

- STEP 7** Cover with latex glove or wrap foot for faster cure. Continue to hold the hoof for up for 2 to 3 minutes before laying foot on floor. (See figure 9)

- STEP 8** Once cured, use sander to clean up foot and remove excess Equilox. The hoof can then be rasped, nailed, and trimmed just like natural hoof wall.



# QUARTER CRACK REPAIR

Before repairing a quarter crack, thoroughly clean the crack out and pack it off with a disinfectant or cotton barrier to prevent abscessing. Never apply adhesive directly against the bed of a crack.

- STEP 1** Use tape and cover up corner advance, base of hairline, shoe, and any other area of the foot that you don't want to come in contact with adhesive.
  - STEP 2** Cut a reinforcing fabric (such as fiberglass composite cloth or carbon fiber and kevlar mesh) into approximately three to four 4" strips, and smear Equilox Adhesive onto each strip. (See figure 10)
  - STEP 3** Smear Equilox Adhesive across the crack.
  - STEP 4** Take a strip of the coated reinforcing fabric and bridge it across the crack. Repeat as necessary until patch is extended at least one and a half inches beyond edge of crack.
  - STEP 5** Apply extra glue to edges of repair and feather over sound hoof wall.
  - STEP 6** Remove excess glue, and clean up edges of repair with gauze.
  - STEP 7** Once adhesive becomes tacky, wrap foot to seal out oxygen during the curing process. Be careful not to shift the patch while wrapping the foot. At this point, the horse may stand on the repaired hoof.
  - STEP 8** Once cured, unwrap the hoof, remove tape, and clean up edges of the repair with rasp until smooth. (See figures 11, 12, and 13)
- Tip: To test the cure, tap on the repair with a hoof knife. When tapping sounds solid, the adhesive should be cured.
- STEP 9** The Equilox repair will stay tightly bonded to the natural hoof for up to eight weeks or more. As the natural hoof wall regenerates down, the Equilox adhesion is trimmed off.

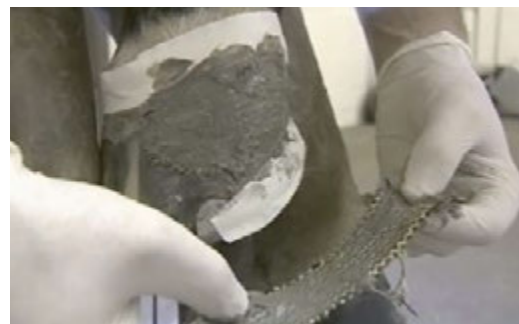


Figure 10



Figure 11



Figure 12



Figure 13

“

I have used Equilox from its inception for all types of hoof wall repair and hoof wall reconstruction. If attention is paid to the required detail during the application, Equilox gives the most consistent and superior results compared to other products I have used. Moreover, not only was there extensive research to develop the product, the research continues to improve the product and create alternative versions such as Medicated Equilox.

- STEPHEN E. O'GRADY, DVM, MRCVS



## TIPS AND HINTS

- » *Equilox Adhesive should only be applied by a farrier, veterinarian, or someone familiar with the product.*
- » *Always check for any possible infection before applying Equilox Adhesive. If adhesive is applied directly over an infection, it could result in further complications. Instead, contact your veterinarian for treatment and allow the infection to clear completely before attempting repair.*
- » *Avoid contact with eyes, skin, or clothing. We recommend wearing latex gloves when applying Equilox.*
- » *Use with adequate ventilation, and avoid prolonged or repeated breathing of vapor.*
- » *When applying Equilox Adhesive in colder climates, maintain the resin at a temperature of 50° Fahrenheit or above.*
- » *Equilox I Slower Setting Adhesive cures in approximately 10 to 13 minutes at 70° Fahrenheit. Equilox II Faster Setting Adhesive cures in approximately 6 to 8 minutes at 70° Fahrenheit. Curing times will vary depending on air temperature during application.*
- » *The shelf life of Equilox Adhesive is at least six months from the fill date indicated on the label, or longer if refrigerated.*